

# Thomas Robinson Architects

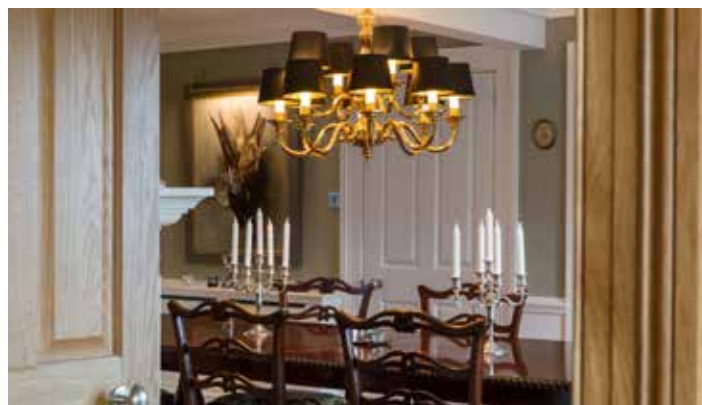


perfectly in its surroundings, with a traditional feel yet with every luxury mod con you'd expect.'

Architect Thomas Robinson says, 'Attention to detail is crucial in every build. Before you even start there are challenges to consider. How will this building fit into the landscape? Will it complement or detract from the area's traditional building style? Can we use local materials? How do we make it great while sticking to the client's budget?' Finding successful answers to these problems helps to make great buildings.'

Most really good buildings stretch those who build them – the client, builders, tradespeople and the architect. A building that has extensive thought, expertise and painstaking attention to detail applied to it will likely look and feel better and last longer than one that is hastily planned and assembled.

Take this new Highland country house, pictured. Fiona Robinson, a director at Thomas Robinson Architects, designed the interior, from the double-height hallway and grand staircase to the fireplaces, lighting and coffered ceilings, also helping to choose furnishings. 'The reason it works so well is down to attention to detail,' she says. 'I worked closely with the client, builders and tradespeople. The end result is a beautiful new home that fits



## PROPERTYFACTS

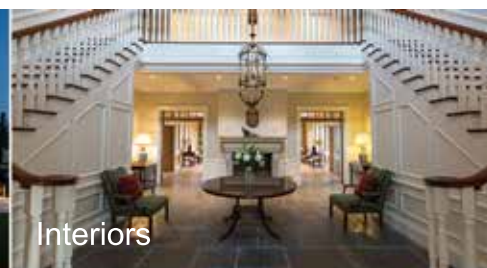
Tel: 01360 661144 (Glasgow), 01224 228338 (Aberdeen), 01463 554334 (Inverness).  
Email: mail@thomasrobinsonarchitects.co.uk



Residential



Private Residences



Interiors



Church & Community



Commercial



Conservation

## Thomas Robinson | Architects

Architecture for private clients, businesses & organisations

Do you need solutions for your building projects?  
Whatever project you are planning we would welcome the chance to talk to you.

www.thomasrobinsonarchitects.co.uk  
mail@thomasrobinsonarchitects.co.uk

Glasgow: 01360 661144    Aberdeen: 01224 228338    Inverness: 01463 554334